

ENCORE AT BRAVO



TYPICAL TOWER SUITES

Suite Type	Bath	Model Name & Size	Exposure	Starting From*
1 Bed	1	NEW ORLEANS 470	North	\$566,990
1 Bed	1	NEW ORLEANS 480	East	\$581,990
1 Bed + Den	1	KYOTO 585	NorthWest	\$677,990
2 Bed	1	VALENCIA 622	North	\$742,790
2 Bed	1	VALENCIA 624	South	\$742,390
2 Bed	2	VALENCIA 691	NorthEast	\$816,590
2 Bed	2	VALENCIA 691 R	SouthEast	\$831,990
2 Bed	2	VALENCIA 698	SouthWest	\$831,990

LOWER TOWER SUITES

Suite Type	Bath	Model Name & Size	Exposure	Starting From*
Studio	1	RIO 390	South	\$483,990
Studio	1	RIO 425	NorthWest	\$522,990
Studio	1	RIO 430	North	\$527,990
1 Bed + Den	2	BANGALORE 548	North	\$687,990
1 Bed + Den	2	BANGALORE 572	South	\$725,990
2 Bed	2	VALENCIA 614	North	\$752,390
2 Bed	1	VALENCIA 642	NorthWest	\$764,790
2 Bed	2	VALENCIA 685	South	\$838,790

DEPOSIT STRUCTURE

\$12,000 on Signing

Balance of 5% in 30 days

2.5% in 180 days

2.5% in 360 days

2.5% in 600 days

2.5% in 750 days

5% on Occupancy

Deposit Payable to:

Dentons Canada LLP In Trust

MAINTENANCE FEE

\$0.73/S.F

(Hydro, Water, Heating/Cooling metered separately)

PARKING

\$70,000

(Available for purchase with 2 bedroom & larger suites only)

TENTATIVE OCCUPANCY

Q1 2029

CONNECT WITH MENKES SALES

Email: 4989condo@gmail.com

*All prices, figures and materials are preliminary and are subject to change without notice. Note: For more information on the method used for calculating the floor area of any unit, reference should be made to Home Construction Regulatory Authority ("HCRA") Directive. Please see Sales Representative for details. E.&O.E. May 2024.

ENCORE AT BRAVO



GRAND OPENING SPECIAL INCENTIVES

\$25,000 PARKING DISCOUNT
(FIRST 200 UNITS SOLD)

1-YEAR MAINTENANCE CREDIT
(FIRST 200 UNITS SOLD)

\$1,000 YORKDALE GIFT CARD
(FIRST 200 UNITS SOLD)

CAPPED DEVELOPMENT LEVIES
699 S.F or Smaller: \$12,000 + HST
700 S.F or Larger: \$14,000 + HST

FREE ASSIGNMENT
Value of \$5,000

RIGHT TO LEASE DURING INTERIM OCCUPANCY

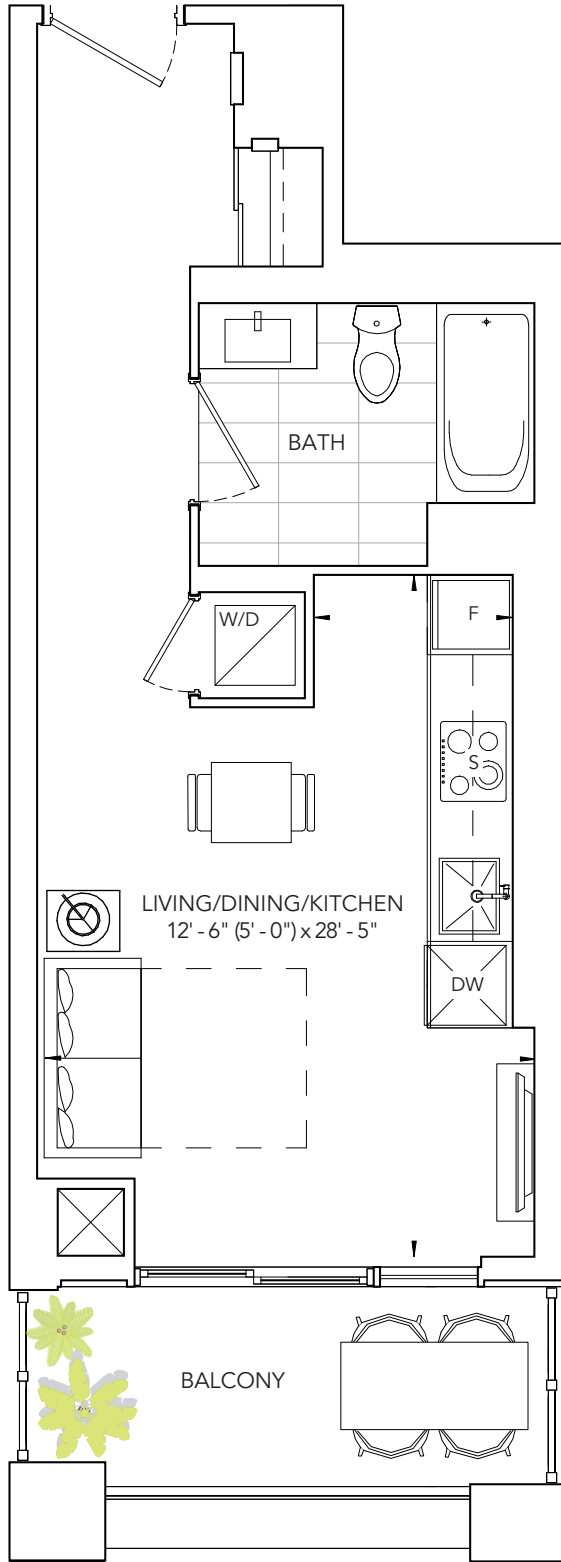
FREE VERTICAL BLINDS
Valued up to \$5,000

CAPPED METER INSTALLATION
\$2,000 + HST

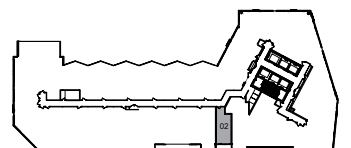
ENCORE AT BRAVO

RIO 30
STUDIO .H
INTERIOR: 390 SQ. FT. | EXTERIOR: 425 SQ. FT.
TOTAL: 815 SQ. FT.

ASKcondo.ca
토론도 판도 분양 및 매매



*Prices, sizes and specifications subject to change without notice. E.&O.E. The dimensions shown of this plan are approximate and subject to normal construction variances. Actual useable floor space within the unit may vary from any stated floor areas or dimensions on this plan. Furniture is displayed for illustration purposes only and does not necessarily reflect the electrical plan for the suite. Suites are sold unfurnished. For more information on the method used for calculating the floor area of any unit, reference should be made to Builder Bulletin No. 22 published by Tarion.

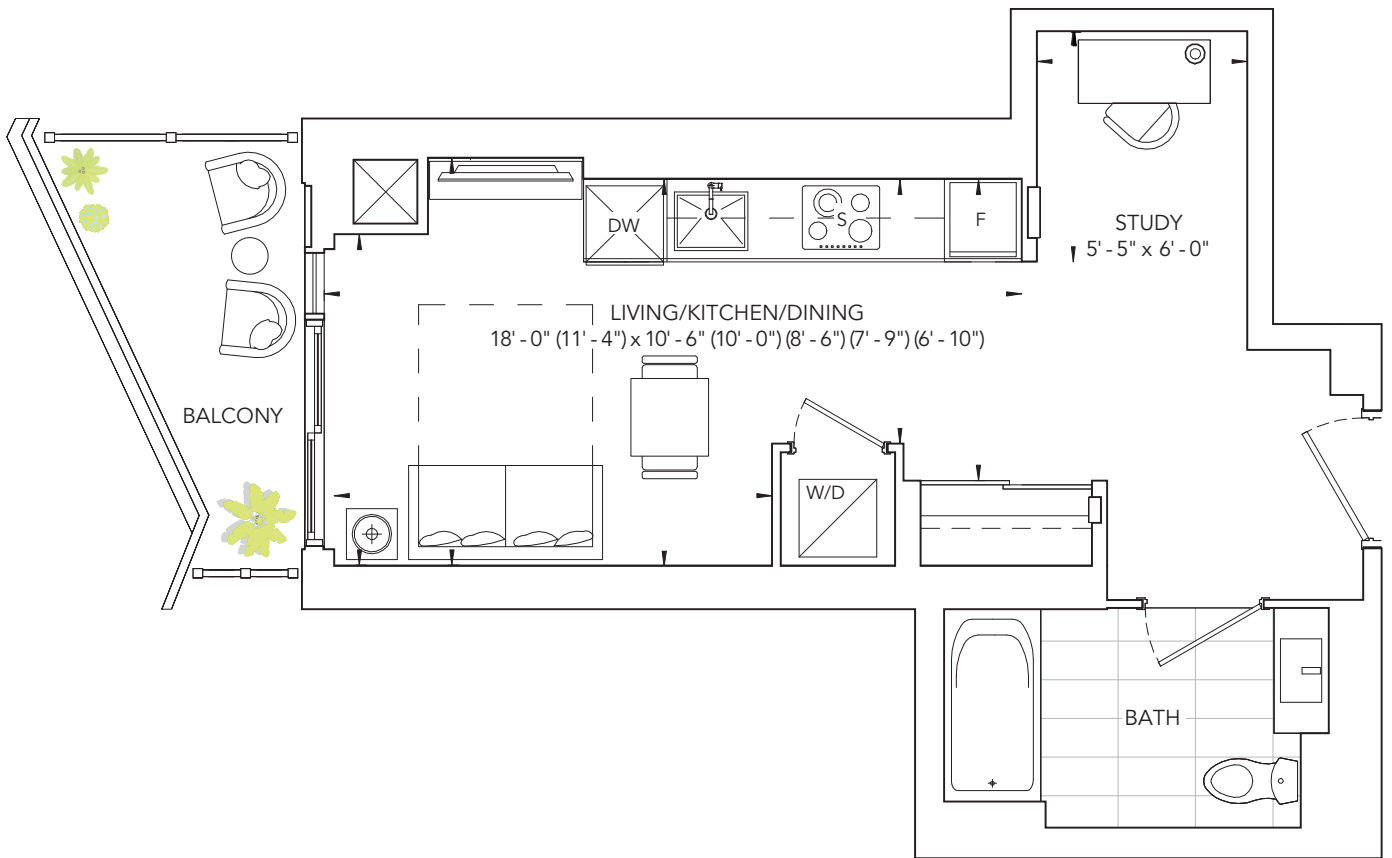


Third Floor

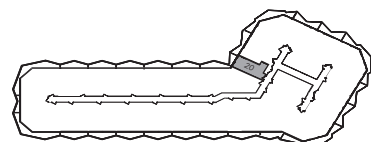
ENCORE AT BRAVO

RIO 4
ASKcondo.ca
토론도 판도방랑 및 매매

STUDY 5'-5" x 6'-0"
INTERIOR: 425 SQ. FT. | EXT. 54 SQ. FT.
TOTAL 479 SQ. FT.



*Prices, sizes and specifications subject to change without notice. E.&O.E. The dimensions shown of this plan are approximate and subject to normal construction variances. Actual useable floor space within the unit may vary from any stated floor areas or dimensions on this plan. Furniture is displayed for illustration purposes only and does not necessarily reflect the electrical plan for the suite. Suites are sold unfurnished. For more information on the method used for calculating the floor area of any unit, reference should be made to Builder Bulletin No. 22 published by Tarion.



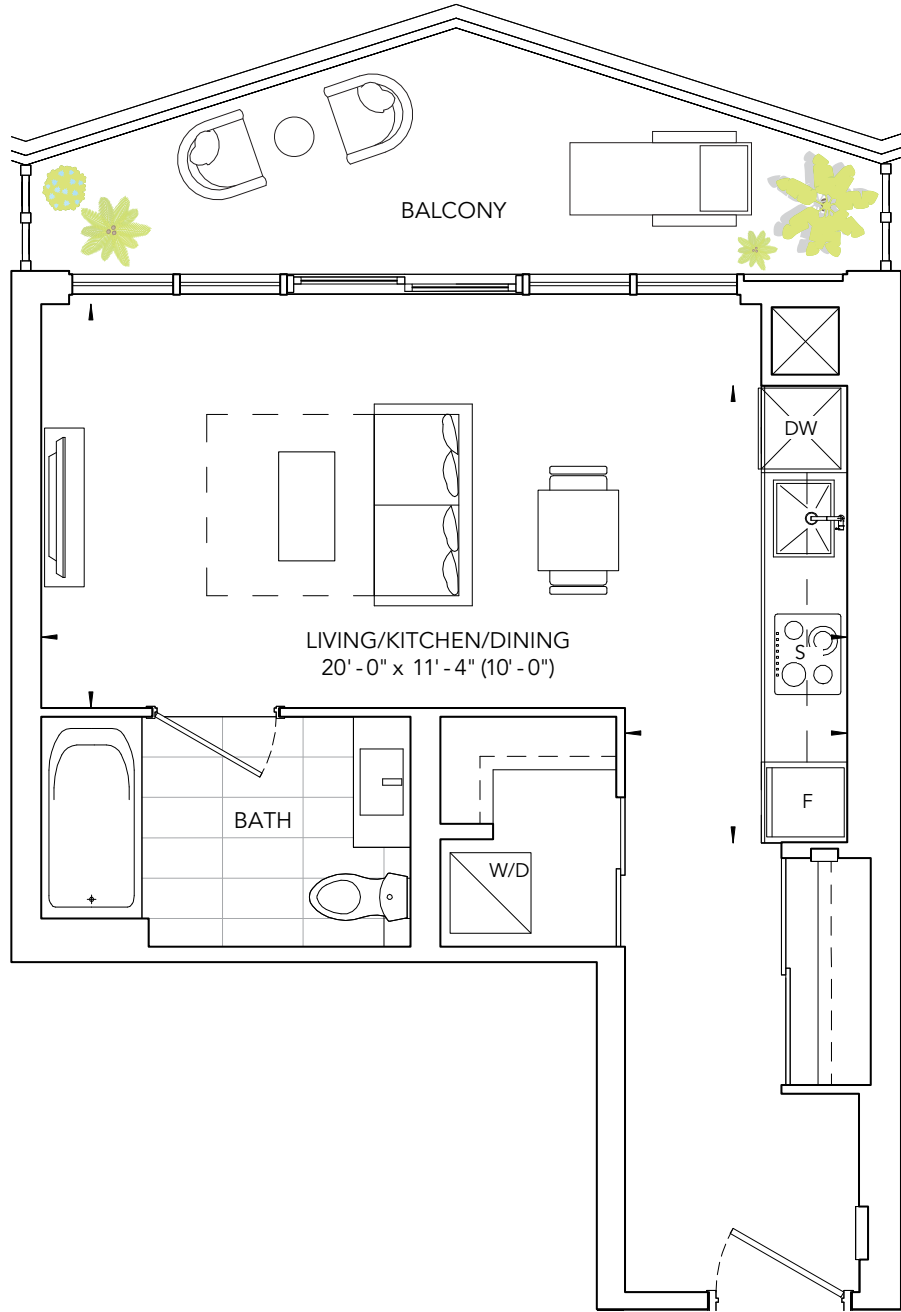
Sixth and Seventh Floor

ENCORE AT BRAVO

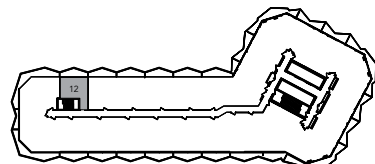
RIO 4

ASKcondo.ca
토론도 판도방랑 및 매매

STUDIO 1 TH
INTERIOR: 430 SQ. FT. | EXTERIOR: 28 SQ. FT.
TOTAL: 458 SQ. FT.



*Prices, sizes and specifications subject to change without notice. E.&O.E. The dimensions shown of this plan are approximate and subject to normal construction variances. Actual useable floor space within the unit may vary from any stated floor areas or dimensions on this plan. Furniture is displayed for illustration purposes only and does not necessarily reflect the electrical plan for the suite. Suites are sold unfurnished. For more information on the method used for calculating the floor area of any unit, reference should be made to Builder Bulletin No. 22 published by Tarion.



Sixth and Seventh Floor

ENCORE AT BRAVO

NEW ORLEANS 47

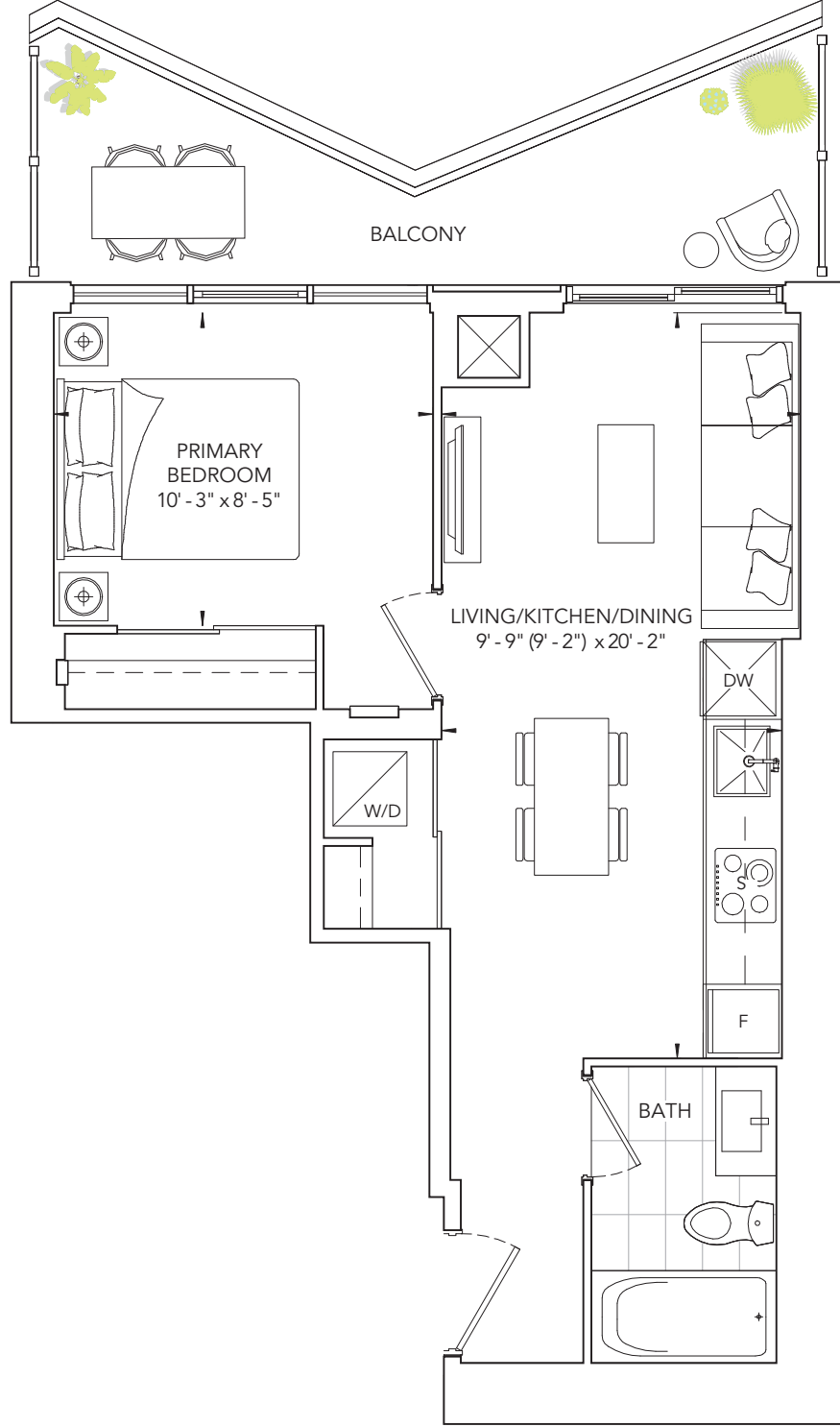
ONE BEDROOM

INTERIOR: 470 SQ. FT. | EXTERIOR: 500 SQ. FT.

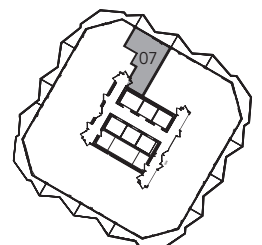
TOTAL: 970 SQ. FT.



ASKcondo.ca
토론도 판도방랑 및 매매



*Prices, sizes and specifications subject to change without notice. E.&O.E. The dimensions shown of this plan are approximate and subject to normal construction variances. Actual useable floor space within the unit may vary from any stated floor areas or dimensions on this plan. Furniture is displayed for illustration purposes only and does not necessarily reflect the electrical plan for the suite. Suites are sold unfurnished. For more information on the method used for calculating the floor area of any unit, reference should be made to Builder Bulletin No. 22 published by Tarion.

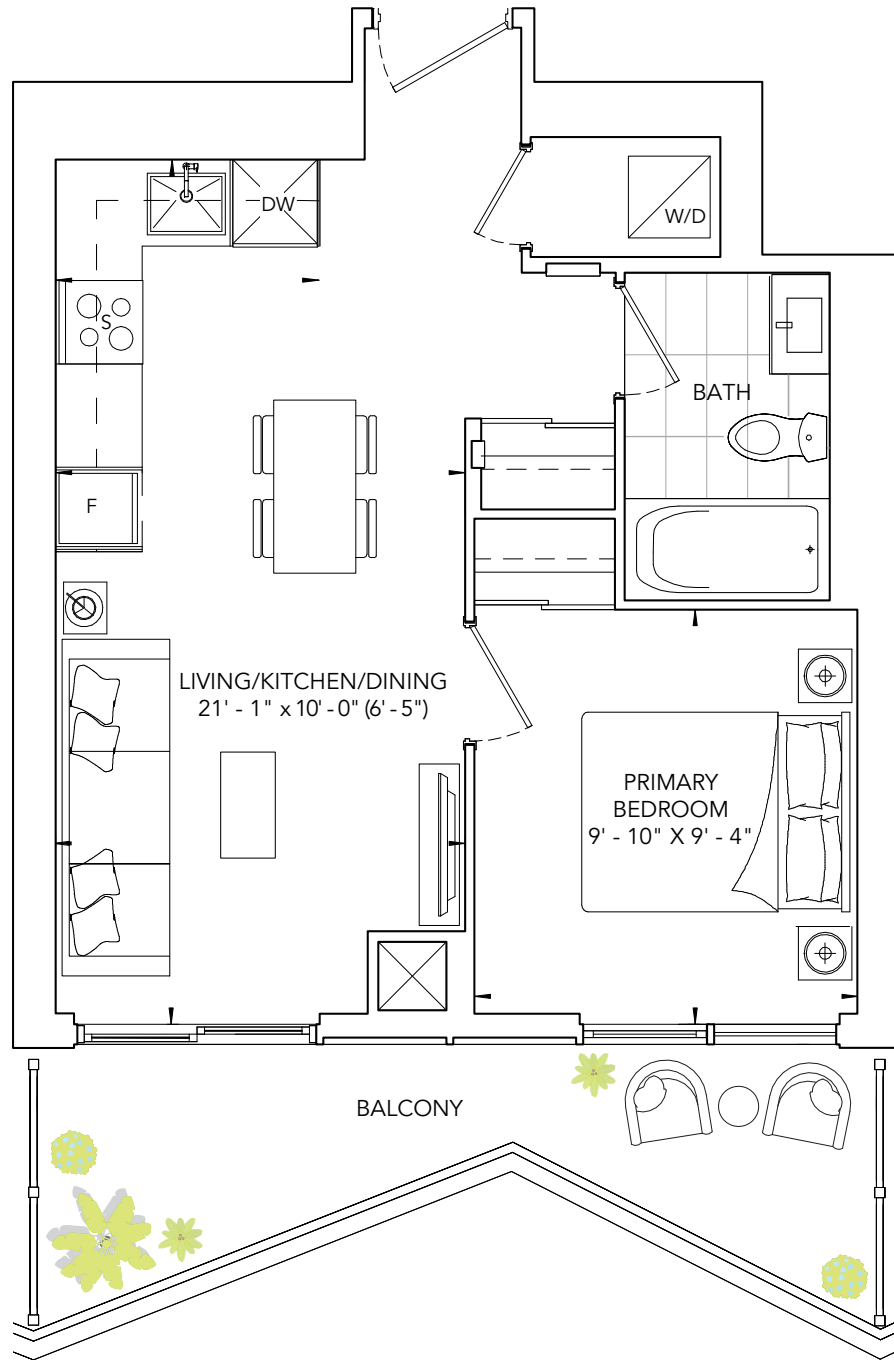


Typical Floor

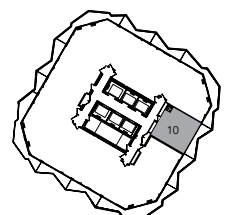
ENCORE AT BRAVO

NEW ORLEANS

ONE BEDROOM
 INTERIOR: 480 SQ. FT. | EXTERIOR: 538 SQ. FT.



*Prices, sizes and specifications subject to change without notice. E.&O.E. The dimensions shown of this plan are approximate and subject to normal construction variances. Actual useable floor space within the unit may vary from any stated floor areas or dimensions on this plan. Furniture is displayed for illustration purposes only and does not necessarily reflect the electrical plan for the suite. Suites are sold unfurnished. For more information on the method used for calculating the floor area of any unit, reference should be made to Builder Bulletin No. 22 published by Tarion.



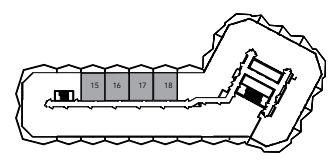
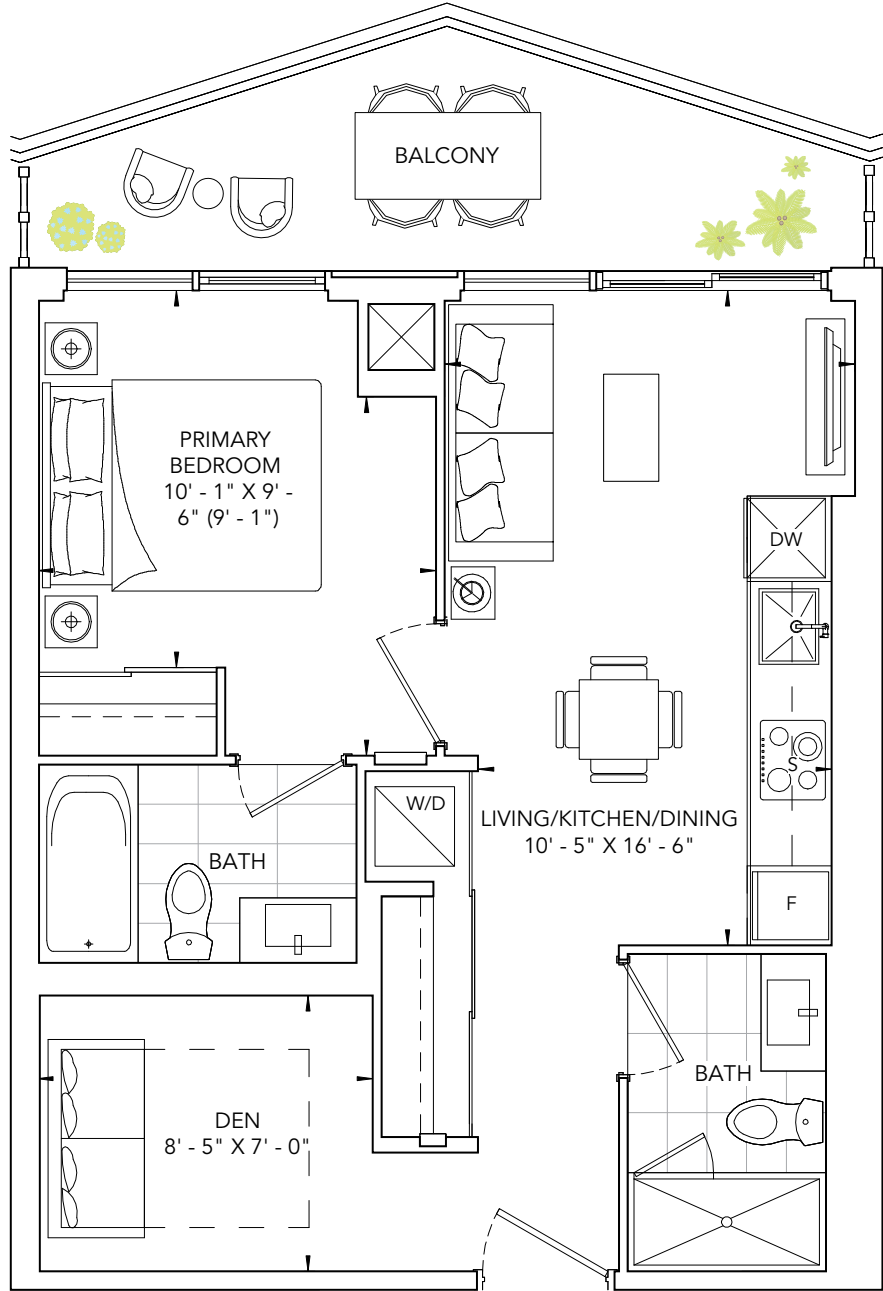
Typical Floor

ENCORE AT BRAVO

BANGALORE 5

ONE BEDROOM + DE' 1TH
 INTERIOR: 548 SQ. FT. | EXT' 30 SQ. FT.
 T.C. 578 SQ. FT.

ASKcondo.ca
 부동산 임대/매매 및 관리



*Prices, sizes and specifications subject to change without notice. E.&O.E. The dimensions shown of this plan are approximate and subject to normal construction variances. Actual useable floor space within the unit may vary from any stated floor areas or dimensions on this plan. Furniture is displayed for illustration purposes only and does not necessarily reflect the electrical plan for the suite. Suites are sold unfurnished. For more information on the method used for calculating the floor area of any unit, reference should be made to Builder Bulletin No. 22 published by Tarion.

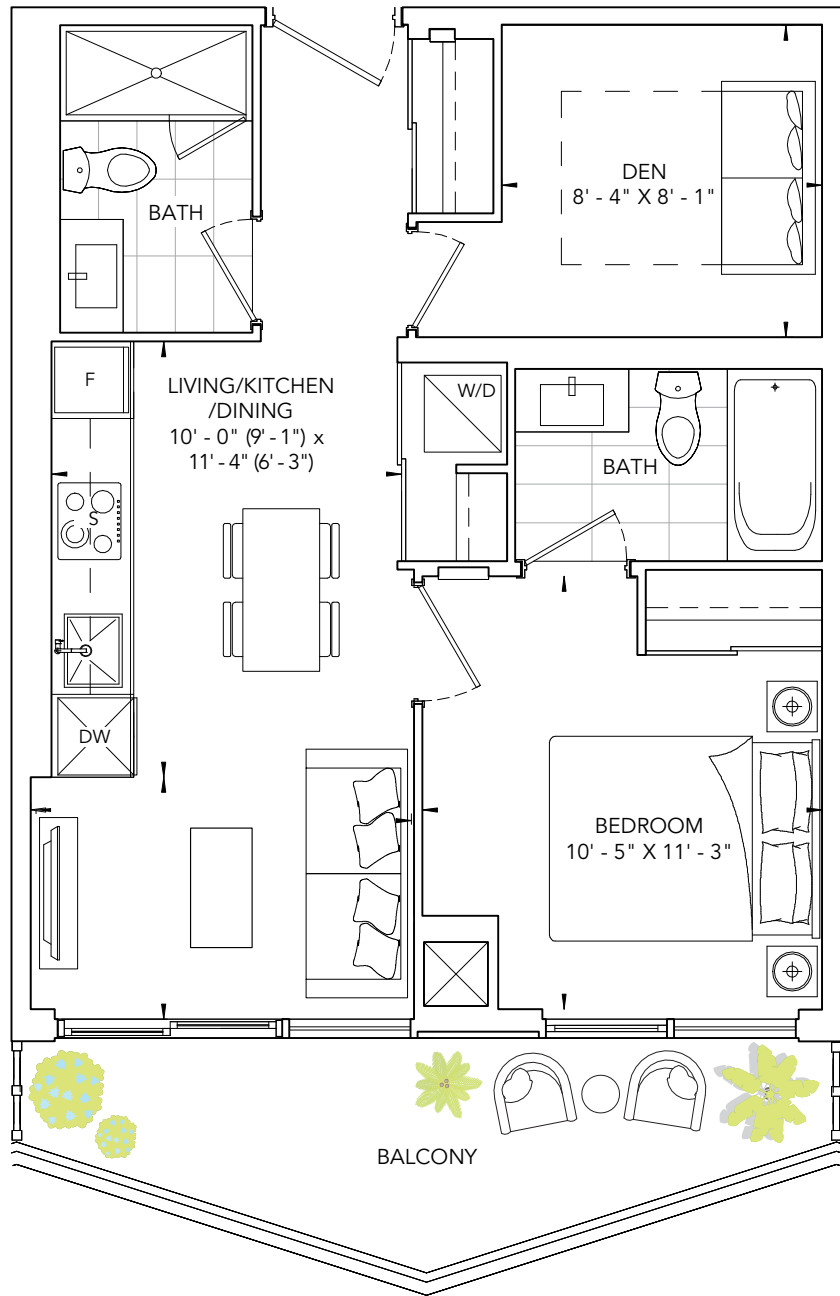
Sixth and Seventh Floor

ENCORE AT BRAVO

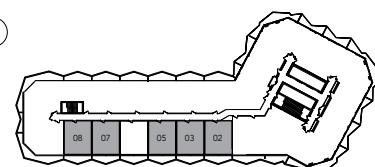
BANGALORE 5

ONE BEDROOM + DEN
 INTERIOR: 572 SQ. FT. | EXTERIOR: 615 SQ. FT.
 TOTAL: 1187 SQ. FT.

ASKcondo.ca
 부동산 임대중개 및 매매



*Prices, sizes and specifications subject to change without notice. E.&O.E. The dimensions shown of this plan are approximate and subject to normal construction variances. Actual useable floor space within the unit may vary from any stated floor areas or dimensions on this plan. Furniture is displayed for illustration purposes only and does not necessarily reflect the electrical plan for the suite. Suites are sold unfurnished. For more information on the method used for calculating the floor area of any unit, reference should be made to Builder Bulletin No. 22 published by Tarion.



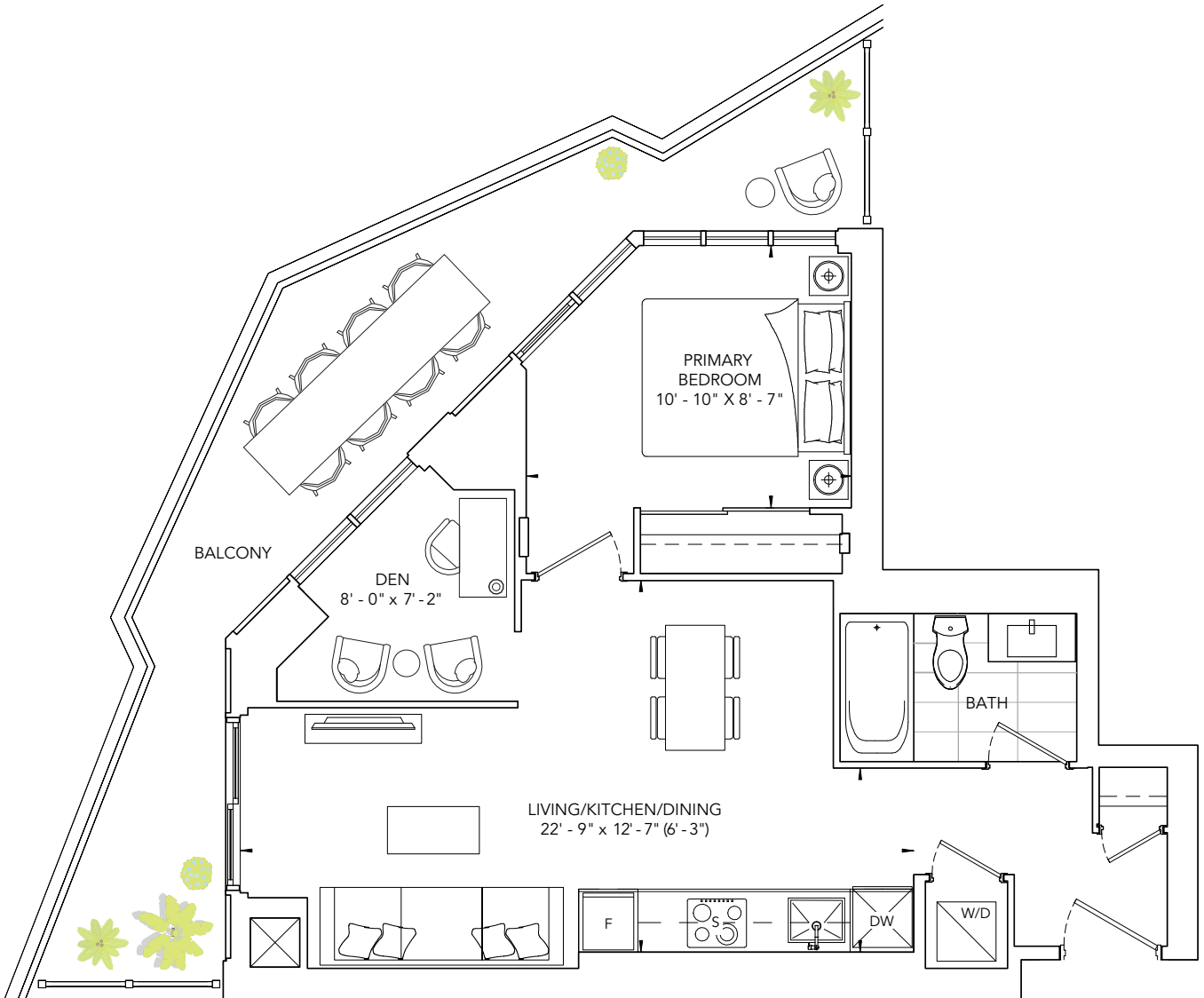
Sixth and Seventh Floor

ENCORE AT BRAVO

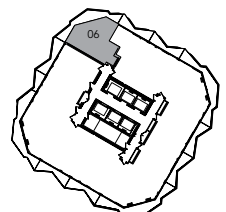
KYOTO 5

ONE BEDROOM + DEN' , H
 INTERIOR: 585 SQ. FT. | EXTER' SQ. FT.
 TC 3 SQ. FT.

ASKcondo.ca
 토목도 컨도 분양 및 매매



*Prices, sizes and specifications subject to change without notice. E.&O.E. The dimensions shown of this plan are approximate and subject to normal construction variances. Actual useable floor space within the unit may vary from any stated floor areas or dimensions on this plan. Furniture is displayed for illustration purposes only and does not necessarily reflect the electrical plan for the suite. Suites are sold unfurnished. For more information on the method used for calculating the floor area of any unit, reference should be made to Builder Bulletin No. 22 published by Tarion.



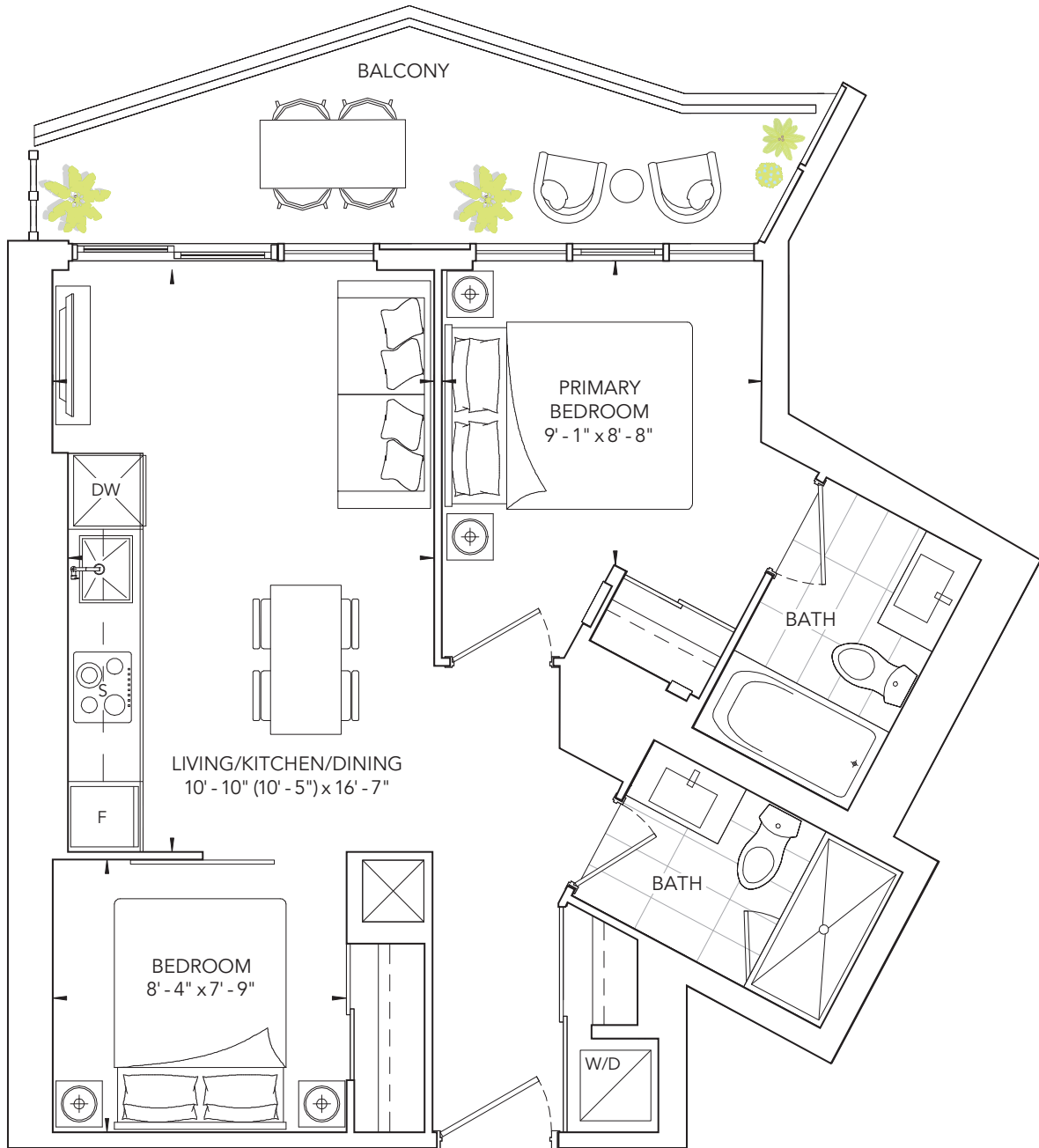
Typical Floor

ENCORE AT BRAVO

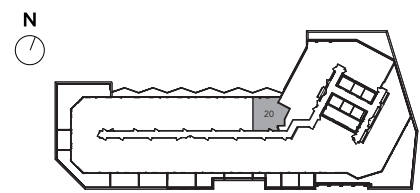
VALENCIA

TWO BEDROOM 1TH
 INTERIOR: 614 SQ. FT. | EXT^R: 3 SQ. FT.
 TC 108 SQ. FT.

ASKcondo.ca
 토목도 관도량 및 매매



*Prices, sizes and specifications subject to change without notice. E.&O.E. The dimensions shown of this plan are approximate and subject to normal construction variances. Actual useable floor space within the unit may vary from any stated floor areas or dimensions on this plan. Furniture is displayed for illustration purposes only and does not necessarily reflect the electrical plan for the suite. Suites are sold unfurnished. For more information on the method used for calculating the floor area of any unit, reference should be made to Builder Bulletin No. 22 published by Tarion.



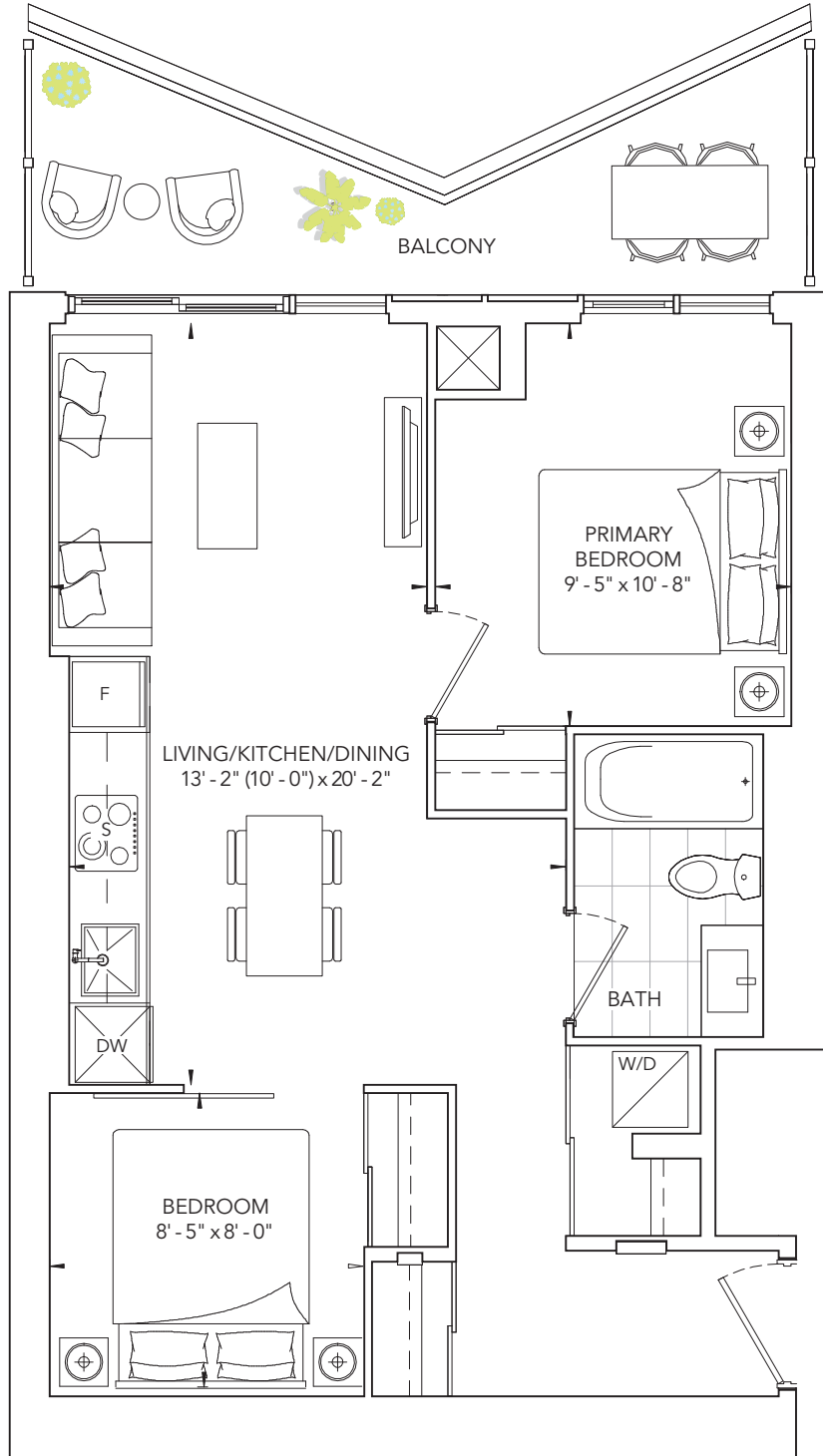
Fifth Floor

ENCORE AT BRAVO

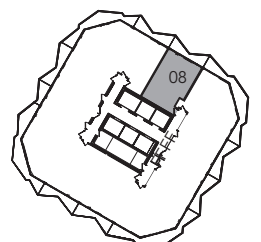
VALENCIA

TWO BEDROOM
INTERIOR: 622 SQ. FT. | EXTERIOR: 646 SQ. FT.

ASKcondo.ca
토론도 판도방망 및 매매



*Prices, sizes and specifications subject to change without notice. E.&O.E. The dimensions shown of this plan are approximate and subject to normal construction variances. Actual useable floor space within the unit may vary from any stated floor areas or dimensions on this plan. Furniture is displayed for illustration purposes only and does not necessarily reflect the electrical plan for the suite. Suites are sold unfurnished. For more information on the method used for calculating the floor area of any unit, reference should be made to Builder Bulletin No. 22 published by Tarion.



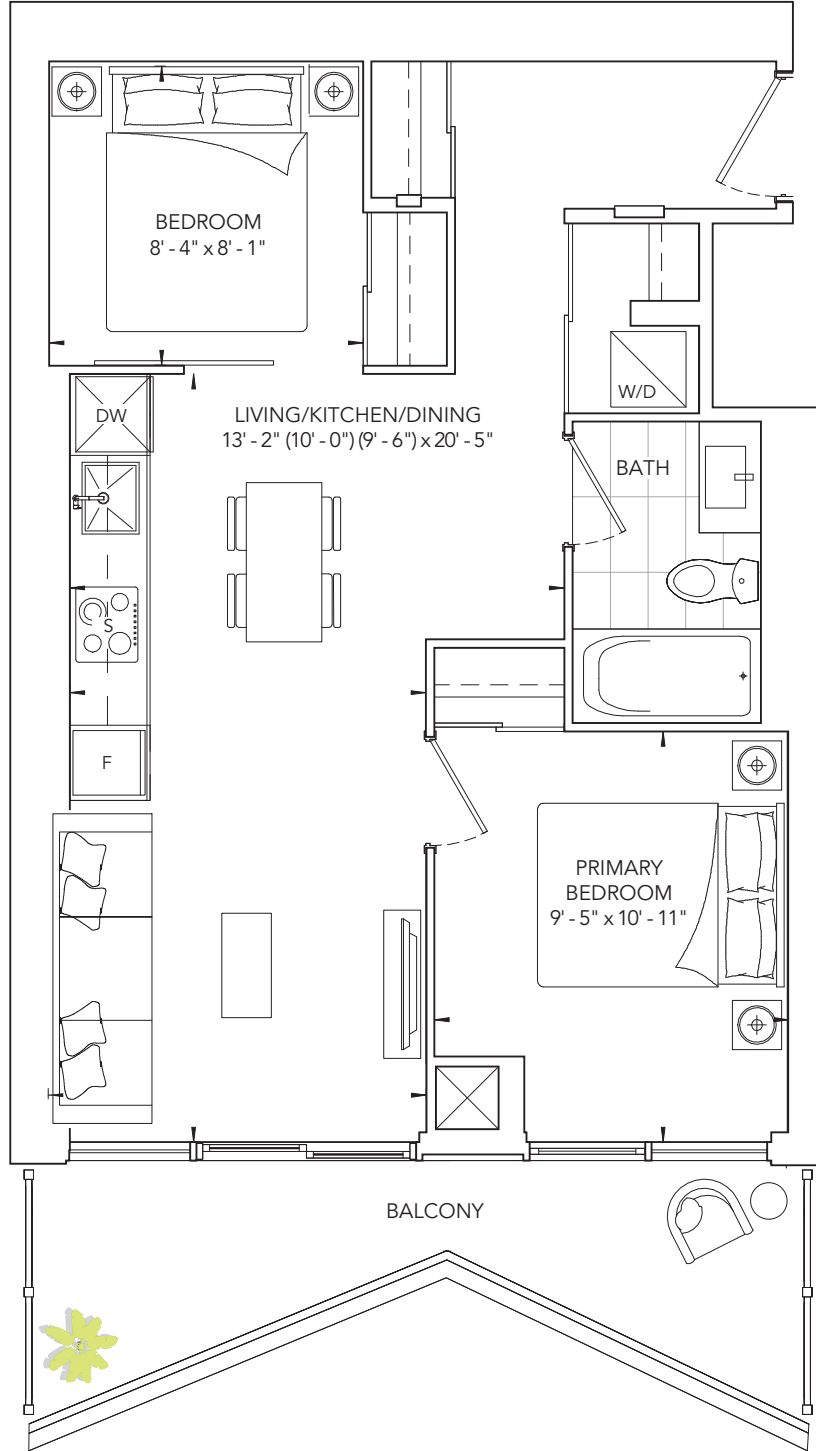
Typical Floor

ENCORE AT BRAVO

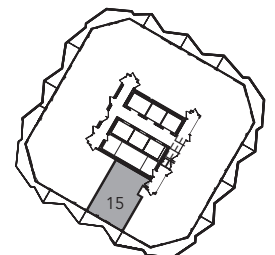
VALENCIA

ASKcondo.ca
토론도 판도방영 및 매매

TWO BEDROOM .5 BATH
INTERIOR: 624 SQ. FT. | EXTERIOR: 726 SQ. FT.



*Prices, sizes and specifications subject to change without notice. E.&O.E. The dimensions shown of this plan are approximate and subject to normal construction variances. Actual useable floor space within the unit may vary from any stated floor areas or dimensions on this plan. Furniture is displayed for illustration purposes only and does not necessarily reflect the electrical plan for the suite. Suites are sold unfurnished. For more information on the method used for calculating the floor area of any unit, reference should be made to Builder Bulletin No. 22 published by Tarion.

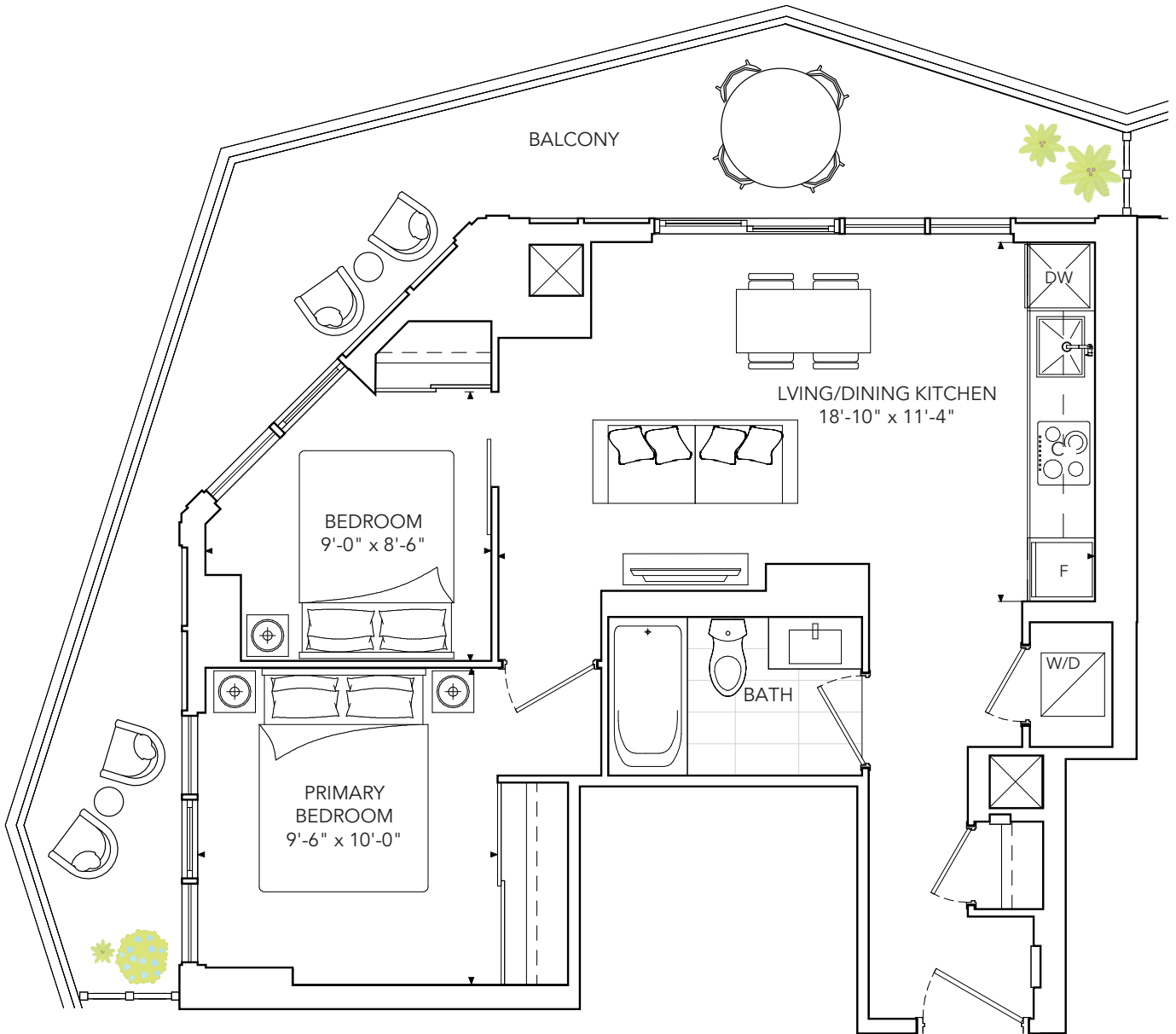


Typical Floor

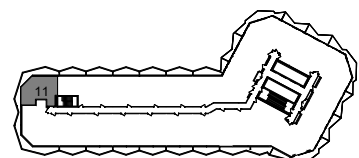
ENCORE AT BRAVO

VALENCIA

TWO BEDROOM
 INTERIOR: 642 SQ. FT.
 SQ. FT. T.C. 666 SQ. FT.



*Prices, sizes and specifications subject to change without notice. E.&O.E. The dimensions shown of this plan are approximate and subject to normal construction variances. Actual useable floor space within the unit may vary from any stated floor areas or dimensions on this plan. Furniture is displayed for illustration purposes only and does not necessarily reflect the electrical plan for the suite. Suites are sold unfurnished. For more information on the method used for calculating the floor area of any unit, reference should be made to Builder Bulletin No. 22 published by Tarion.



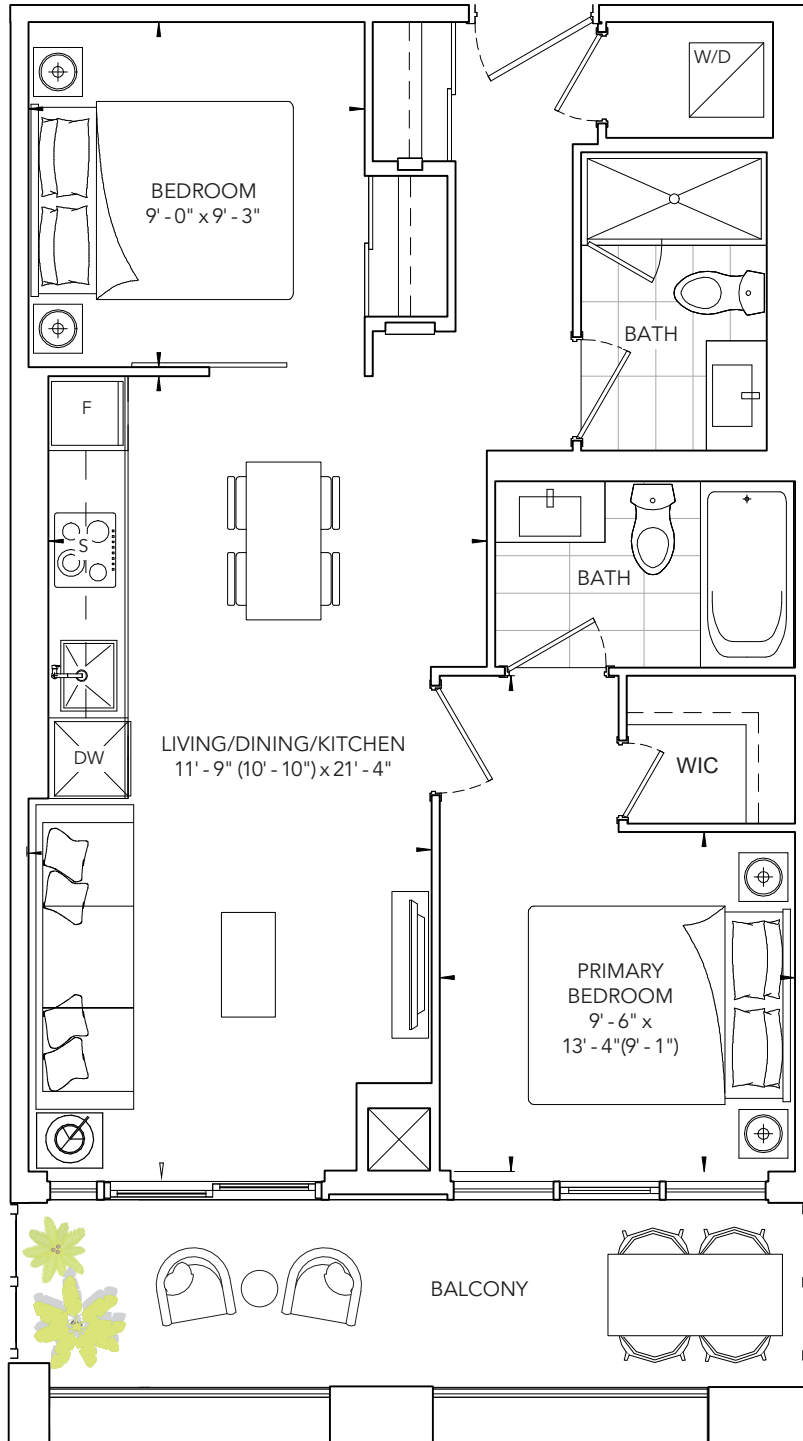
Sixth and Seventh Floor

ENCORE AT BRAVO

VALENCIA

ASKcondo.ca
토론도 판도 분양 및 매매

TWO BEDROOM 1TH
INTERIOR: 685 SQ. FT. | EXTERIOR: 722 SQ. FT.
TC 722 SQ. FT.



*Prices, sizes and specifications subject to change without notice. E.&O.E. The dimensions shown of this plan are approximate and subject to normal construction variances. Actual useable floor space within the unit may vary from any stated floor areas or dimensions on this plan. Furniture is displayed for illustration purposes only and does not necessarily reflect the electrical plan for the suite. Suites are sold unfurnished. For more information on the method used for calculating the floor area of any unit, reference should be made to Builder Bulletin No. 22 published by Tarion.



Third Floor

ENCORE AT BRAVO

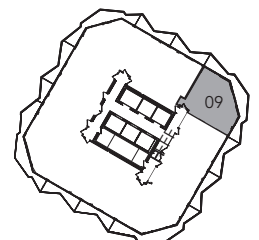
VALENCIA

TWO BEDROOM
INTERIOR: 691 SQ. FT. | EXTERIOR: 740 SQ. FT.

ASKcondo.ca
토론도 판도광양 및 매매



*Prices, sizes and specifications subject to change without notice. E.&O.E. The dimensions shown of this plan are approximate and subject to normal construction variances. Actual useable floor space within the unit may vary from any stated floor areas or dimensions on this plan. Furniture is displayed for illustration purposes only and does not necessarily reflect the electrical plan for the suite. Suites are sold unfurnished. For more information on the method used for calculating the floor area of any unit, reference should be made to Builder Bulletin No. 22 published by Tarion.



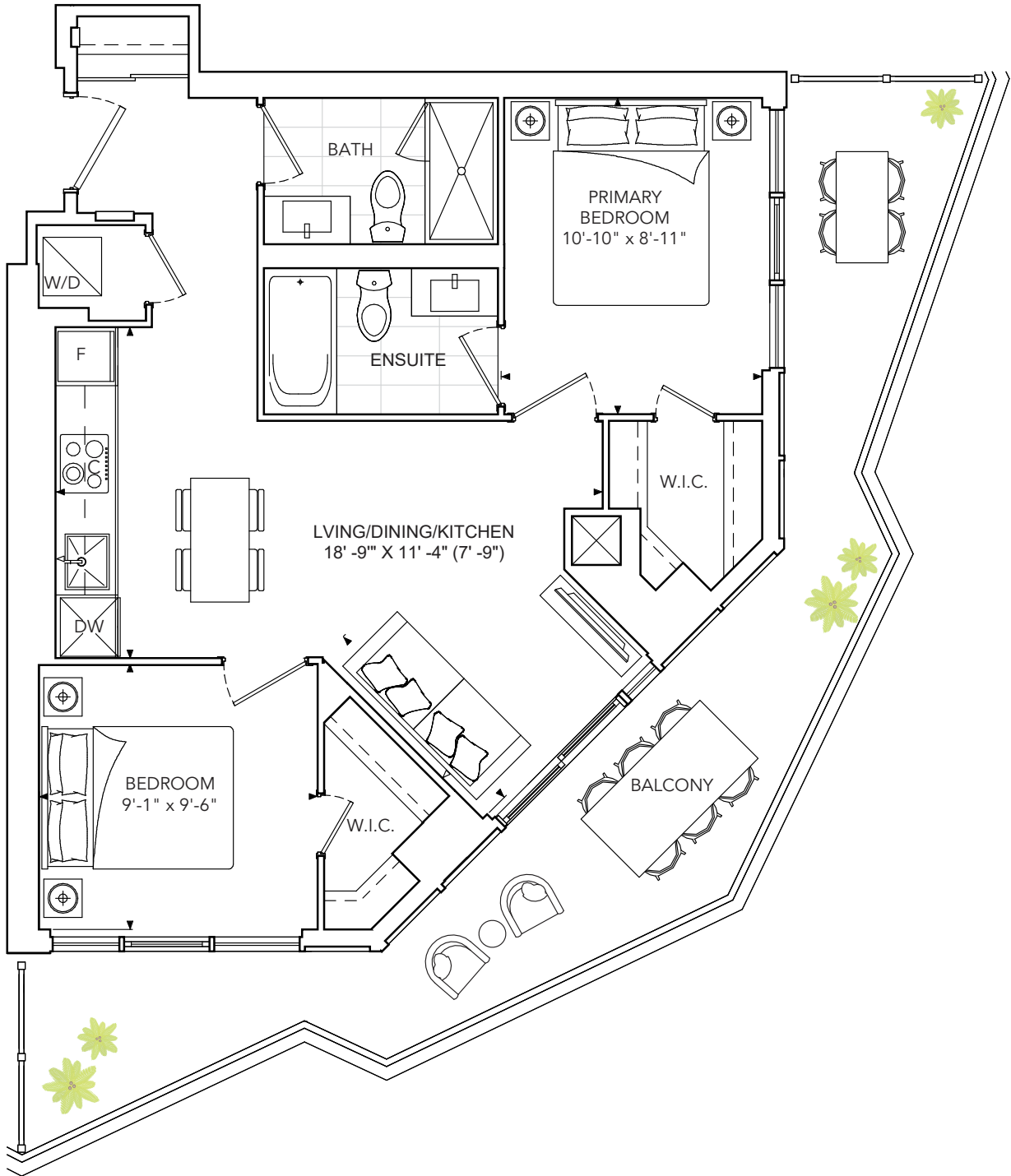
Typical Floor

ENCORE AT BRAVO

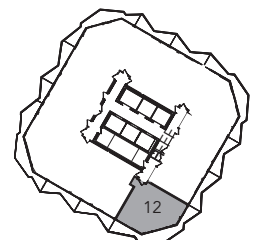
VALENCIA 605

TWO BEDROOM 4TH
 INTERIOR: 691 SQ. FT. | EXTERIOR: 740 SQ. FT.

ASKcondo.ca
 부동산 컨도 분양 및 매매



*Prices, sizes and specifications subject to change without notice. E.&O.E. The dimensions shown of this plan are approximate and subject to normal construction variances. Actual useable floor space within the unit may vary from any stated floor areas or dimensions on this plan. Furniture is displayed for illustration purposes only and does not necessarily reflect the electrical plan for the suite. Suites are sold unfurnished. For more information on the method used for calculating the floor area of any unit, reference should be made to Builder Bulletin No. 22 published by Tarion.



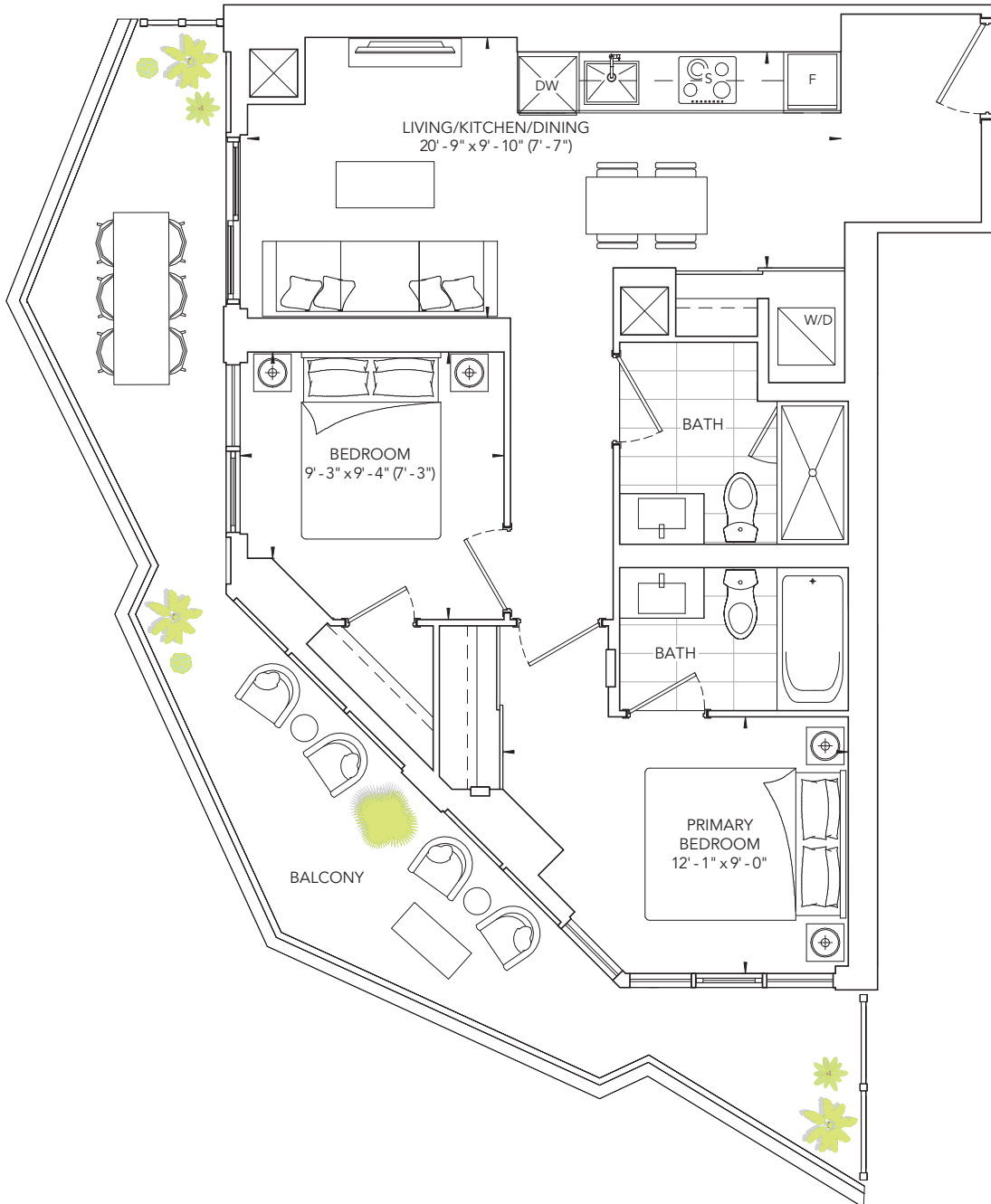
Typical Floor

ENCORE AT BRAVO

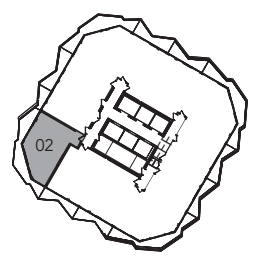
VALENCIA 6

TWO BEDROOM .H
 INTERIOR: 698 SQ. FT. | EXTER' .Q.FT.
 T, .1 SQ. FT.

ASKcondo.ca
 토목도 관도광 및 배매



*Prices, sizes and specifications subject to change without notice. E.&O.E. The dimensions shown of this plan are approximate and subject to normal construction variances. Actual useable floor space within the unit may vary from any stated floor areas or dimensions on this plan. Furniture is displayed for illustration purposes only and does not necessarily reflect the electrical plan for the suite. Suites are sold unfurnished. For more information on the method used for calculating the floor area of any unit, reference should be made to Builder Bulletin No. 22 published by Tarion.



Typical Floor